

RXT-X® 300

The ultimate off-shore performance watercraft.

KEY FEATURES

- BRP Audio - premium system
- Extended Variable Trim System (VTS™)
- Ergolock™ racing seat with knee pads
- Launch control
- Race-inspired X-sponsons
- Direct access front storage



- NEW Premium Midnight Purple
- NEW Millenium Yellow

/iTC/iBR/ST3/CLCS/ECO

CAPACITY

Rider Capacity	888
Weight Capacity	600 lb/272 kg
Fuel Capacity	18.5 US gal/70 L
Glove Box	0.8 US gal/2.9 L
Front Bin	25.3 US gal/96 L
Storage Capacity - Total	26.1 US gal/98.9 L

DIMENSIONS

Length (bumper to bumper)	135.9"/345.1 cm
Width	49.4"/125.5 cm
Height	45.2"/114.7 cm

HULL

Type	ST3 Hull™
Material	Fiberglass

OTHER FEATURES

- iControl*
- Seat strap
- Trim tabs
- Launch control
- Ski tow eye
- RF D.E.S.S.™ key
- LinQ™ attachment system
- Wide-angle mirrors
- Handgrip with palm rests
- Footwell carpets
- Large swim platform
- Tilt steering
- Watertight phone compartment
- Exclusive X colors

ROTAX® ENGINE 1630 ACE™ - 300

Horsepower	300 hp
Intake System	Supercharged with external intercooler
Displacement	1,630 cc
Cooling	Closed-Loop Cooling System (CLCS)
Reverse System	Electronic iBR**
Fuel Type	91 octane
Throttle System	iTC™ (Intelligent Throttle Control) system
Exhaust System	D-Sea-Bel™ system

GAUGE

Type of Gauge	7.6" wide digital display	
Main Functions	<ul style="list-style-type: none"> • Speedometer • RPM • Clock • VTS™ display 	<ul style="list-style-type: none"> • Top speed & average speed • Vehicle hour display
iTC System - mode	<ul style="list-style-type: none"> • Sport mode • ECO® mode • Slow mode 	<ul style="list-style-type: none"> • Speed regulator • Launch control

WEIGHT

Dry Weight	829 lb/376 kg
------------	---------------

WARRANTY

BRP limited warranty covers the watercraft for one year.

*Electronic brake, neutral and reverse.



● NEW Millenium Yellow

FEATURE HIGHLIGHTS



Ergolock™ system

A narrow seat profile with deep knee pockets lets riders sit naturally and use the leg muscles to hold onto the machine for more control.



BRP Audio - premium system (now standard)

An industry-first manufacturer-installed truly waterproof Bluetooth® audio system.



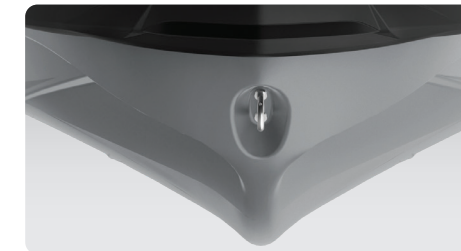
Direct-access front storage

Large front storage area that's easily accessible from a seated position.¹



ROTAX® 1630 ACE™ - 300 engine

The Rotax® 1630 ACE™ is the most powerful Rotax® engine ever, delivering high efficiency and the best-in-class acceleration.



ST3 Hull™

An innovative hull that sets the benchmark for rough water handling, stability, and offshore performance.



Swim platform with integrated LinQ™ system

Exclusive quick-attach system on the largest swim platform in the industry allows for easy installation of storage accessories.

TRAILER (OPTIONAL)

Aluminum MOVE II



- Fully adjustable carpeted bunks (side-to-side/front-to-back) allow you to change bunk angles to fit all watercraft.
- Custom frame design requires less water to load and unload watercraft.
- Sealed maintenance-free wheel bearings for added peace of mind.

Aluminum MOVE I Extended 1250



- All models are available with a galvanized frame for extended life in all weather conditions or in a painted black version, with or without marine jack.
- Move I Extended 1250 and Move II are also available in an aluminum frame that delivers better corrosion resistance to significantly extend life of trailer.