

RXP-X® 300

Race-ready performance watercraft, reimagined.

KEY FEATURES

- Ergolock™ R Features: 1-up performance seat with adjustable rear saddle, low profile handle bars, double angled footwedges, tacky zones, deep knee pockets
- T3-R hull design
- Polished high-performance impeller
- BRP Audio - premium system (optional)
- Large swim platform with LinQ™ attachment system
- Watertight phone compartment
- Race-inspired X-sponsons



- NEW Premium Midnight Purple
- NEW Millenium Yellow

iTC | iBR | T3-R | CLCS | ECO

CAPACITY

Rider Capacity	2
Weight Capacity	400 lb/182 kg
Fuel Capacity	18.5 US gal/70 L
Glove Box	2.56 US gal/9.7 L
Front Bin	37.78 US gal/143 L
Storage Capacity - Total	40.6 US gal/153.7 L

DIMENSIONS

Length (bumper to bumper)	130.6"/331.8 cm
Width	49.2"/125 cm
Height	44"/111 cm

HULL

Type	T3-R Hull™
Material	Fiberglass

OTHER FEATURES

- iControl*
- Trim tabs
- RF D.E.S.S.™ key
- Extended VTS™ (Variable Trim System)
- Launch mode
- Wide-angle mirrors
- Footwell carpets
- Tow hook
- Exclusive X colors

ROTAX® ENGINE 1630 ACE™ - 300

Horsepower	300 hp
Intake System	Supercharged with external intercooler
Displacement	1,630 cc
Cooling	Closed-Loop Cooling System (CLCS)
Reverse System	Electronic iBR**
Fuel Type	91 octane
Throttle System	iTC™ (Intelligent Throttle Control) system
Exhaust System	D-Sea-Bel™ system

GAUGE

Type of Gauge	7.6" wide digital display	
Main Functions	• Speedometer	• Top speed & average speed
	• RPM	• Vehicle hour display
iTC System - mode	• Clock	
	• VTS™ display	
	• Fuel autonomy distance & time to empty	
	• Sport mode	• Speed regulator
	• ECO® mode	• Launch control
	• Slow mode	

WEIGHT

Dry Weight	780 lb/354 kg
------------	---------------

WARRANTY

BRP limited warranty covers the watercraft for one year.

*Electronic brake, neutral and reverse.



- With sound system
- NEW Millenium Yellow

FEATURE HIGHLIGHTS



NEW Ergolock™ R system

A narrow seat profile with deep knee pockets and a revolutionary adjustable cockpit that allows riders to lock in to the machine like never before.



NEW Swim platform with integrated LinQ™ system

Exclusive quick-attach system on a large swim platform that allows for easy installation of accessories.



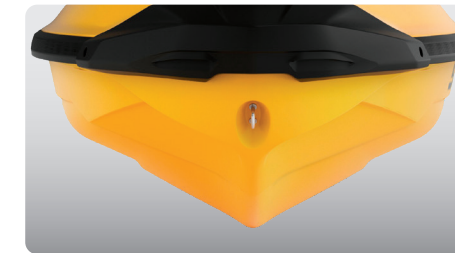
Large front storage

An impressive 38 gallons of sealed storage space allows riders to safely stow belongings while riding.



ROTAX® 1630 ACE™ - 300 engine

The Rotax® 1630 ACE™ is the most powerful Rotax® engine ever, delivering high efficiency and the best-in-class acceleration.



NEW T3-R Hull™

A deep-V design that offers unrivaled handling and acceleration and a new level of control at high speed thanks to its ingenious "shark gills" feature.



BRP Audio - premium system (optional)

An industry-first manufacturer-installed truly waterproof Bluetooth® audio system.

TRAILER (OPTIONAL)

Aluminum MOVE II



- Fully adjustable carpeted bunks (side-to-side/front-to-back) allow you to change bunk angles to fit all watercraft.
- Custom frame design requires less water to load and unload watercraft.
- Sealed maintenance-free wheel bearings for added peace of mind.

Aluminum MOVE I Extended 1250



- All models are available with a galvanized frame for extended life in all weather conditions or in a painted black version, with or without marine jack.
- Move I Extended 1250 and Move II are also available in an aluminum frame that delivers better corrosion resistance to significantly extend life of trailer.