

# FISH PRO™ 170

A new perspective on sport fishing.

## KEY FEATURES

- Garmin<sup>†</sup> ECHOMAP<sup>†</sup> Plus 62cv Fish Finder
- LinQ™ fishing cooler (13.5 US gal/51 L)
- Extended rear platform with second LinQ™ attachment system
- NEW iDF Intelligent Debris Free Pump System
- 5 x fishing rod holder
- Ergolock™ fishing seat
- BRP Audio - premium system (optional)



- NEW White & Gulfstream Blue
- White & Night Green

iDF/iTC/iBR/ST3/CLCS/ECO

## CAPACITY

Rider Capacity	3
Weight Capacity	600 lb/272 kg
Fuel Capacity	18.5 US gal/70 L
Glove Box	0.8 US gal/2.9 L
Front Bin	25.3 US gal/96 L
LinQ™ fishing cooler	13.5 US gal/51 L
Storage Capacity - Total	39.6 US gal/149.9 L

## DIMENSIONS

Length (bumper to bumper)	146.8"/373.4 cm
Width	49.4"/125.5 cm
Height	45.3"/115.1 cm

## HULL

Type	ST3 Hull™
Material	Fiberglass

## OTHER FEATURES

- NEW cupholder
- NEW front rod holder
- Watertight phone compartment
- iControl®
- Seat strap
- Trim tabs
- VTS™ (Variable Trim System)
- Boarding ladder
- Ski tow eye
- RF D.E.S.S.™ key
- LinQ™ attachment system
- Wide-angle mirrors
- Handlegrip with palm rests
- Footwell carpets
- Tilt steering

## ROTAX® ENGINE

1630 ACE™ - 170

Horsepower	170 hp
Intake System	Naturally aspirated
Displacement	1,630 cc
Cooling	Closed-Loop Cooling System (CLCS)
Reverse System	Electronic iBR**
Fuel Type	87 octane
Throttle System	iTC™ (Intelligent Throttle Control) system
Exhaust System	D-Sea-Bel™ system

## GAUGE

Type of Gauge	7.6" wide digital display	
Main Functions	<ul style="list-style-type: none"> <li>• Speedometer</li> <li>• RPM</li> <li>• Clock</li> <li>• VTS™ display</li> <li>• Fuel autonomy distance &amp; time to empty</li> </ul>	<ul style="list-style-type: none"> <li>• Water temperature</li> <li>• Vehicle hour display</li> </ul>
iTC System - mode	<ul style="list-style-type: none"> <li>• Sport mode</li> <li>• ECO® mode</li> </ul>	<ul style="list-style-type: none"> <li>• Trolling mode (slow mode)</li> <li>• Speed regulator</li> </ul>

## WEIGHT

Dry Weight	858 lb/389 kg
------------	---------------

## WARRANTY

BRP limited warranty covers the watercraft for one year.

\*Electronic brake, neutral and reverse.



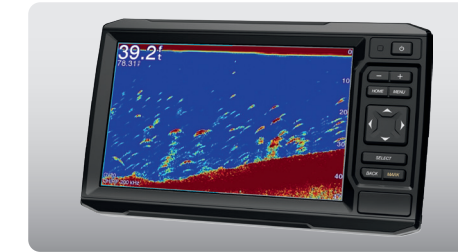
White & Night Green

## FEATURE HIGHLIGHTS



### NEW iDF Intelligent Debris Free Pump System

An innovative, industry-first system that allows you to free your pump of weeds and debris with intuitive handlebar-activated controls.



### GARMIN® Echomap® Plus 62CV fish finder

A top-of-the-line navigation, charting and fish-finding system using CHIRP technology for high-definition images.



### LinQ™ fishing cooler & (5x) fishing rod holders

A spacious, quick-attach fishing cooler designed for easy access and equipped with numerous convenient features.



### Extended rear platform with second LinQ™ attachment system

Adds 11.5 inches to the back of the watercraft to increase stability, space, and storage capability.



### Angled gunwale footrests

Ensures ergonomic and secure posture while fishing from a side position.



### Trolling mode

Gives superior trolling control at low speeds without using the throttle—simply set, maintain and adjust as needed.

## TRAILER (OPTIONAL)

### Aluminum MOVE II



- Fully adjustable carpeted bunks (side-to-side/front-to-back) allow you to change bunk angles to fit all watercraft.
- Custom frame design requires less water to load and unload watercraft.
- Sealed maintenance-free wheel bearings for added peace of mind.

### Aluminum MOVE I Extended 1250



- All models are available with a galvanized frame for extended life in all weather conditions or in a painted black version, with or without marine jack.
- Move I Extended 1250 and Move II are also available in an aluminum frame that delivers better corrosion resistance to significantly extend life of trailer.